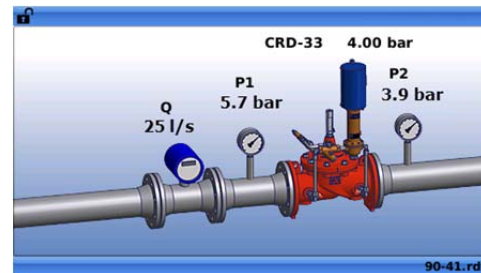


▶ Simple, Reliable and Accurate

▶ D22: Multi PID Regulation Loops CLA-VAL valve controller with built-in ValvApps™



Programming: CLA-VAL D22 is designed to provide fully programmable monitoring and control of pressure, flow, level or valve position. Built-in templates allow incredibly easy and fast programming for each type of customized application. No need for external specialized consultants as the CLA-VAL interface provides a simple link between the CLA-VAL D22 controller and hydraulic control valves.

Power: CLA-VAL D22 is powered by either a CLA-VAL e-Power IP turbine or usual power (12 to 24 VDC).



Log Memory: With an internal rolling memory 128 Mbytes, 80,000,000 values can be logged. Memory is extended to 2 Gb by SD card. Recording speed can be set to: 1 min, 5 min, 15 min, 60 min or customized.



Printed Circuit Board (PCB): Designed with the latest technology and manufactured from high quality electronic components the PCB is fully tropical coated to ensure maximum humidity protection. The output is protected against wrong connection. A resettable fuse is used to protect against over voltage / reverse polarity.

▶ Technical Data



Electrical Specifications

Electrical Power: 12 to 24 VDC / 1.9 W stand-by / 3 W typical / 30 W Max.

CLA-VAL e-Power IP turbine
CLA-VAL Transformer

Power Protection:

- Max. 32 VDC over voltage
- Reverse polarity & short circuit
- 75°C stop high temperature

Housing: UV Resistant

Display: TFT LCD color 4.3" 480 x 242 with Polycarbonate screen, scratch resistant

Input command:

- 6x Analog 4-20 mA
- 6x Digital (dry contact)

Output command:

- 4x Analog 4-20 mA
- 2x Output solenoid
- 2x Relay 6 A

Output 4-20 mA Protection: Max. 32 VDC over voltage

Communication: Interfaces: GPRS Modem Quad band / Ethernet RJ-45 / RS-232 / RS-485
Protocols: ModbusTCP / ModbusRTU / VNC



Other Specifications

Software features:

- 4 x PID
- 4 x Control Curves
- 4 x Action on triggering conditions
- 4 x Analog (4-20 mA) signal re-transmission
- Totaliser

Event Memory: 128 Mbytes rolling memory up to 80,000,000 values capacity (extended to 2 Gb by SD card)

Temperature range: -10°C to + 70°C

Protection: IP68 (2 meter underwater for 2 weeks, factory test: 6 weeks)