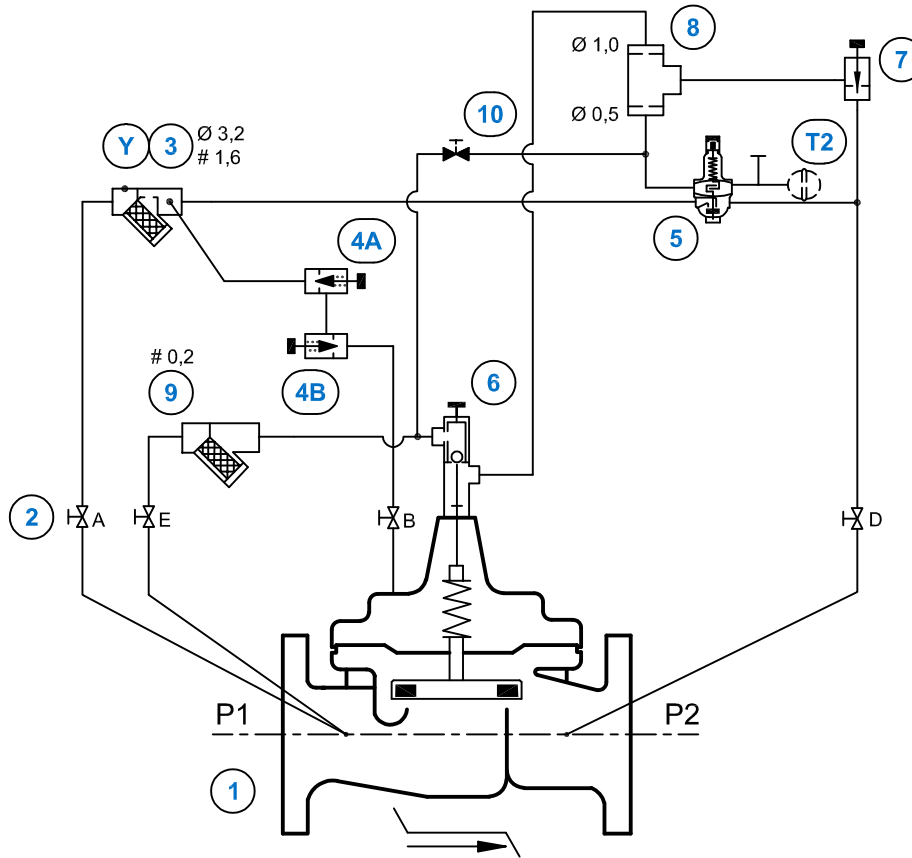


## Dual Stage Pressure Modulation Control Valve / CPM-A On/Off Hydraulic Control



### STANDARD EQUIPMENT

No	Description	Qty	Type
1	MAIN VALVE HYTROL AE/GE/NGE	1	100-01*
2	ISOLATION BALL VALVE	4	RB-117
3	STRAINER WITH INCORPORATED ORIFICE	1	X44-A
4	ONE-WAY FLOW CONTROL	2	CV
5	PRESSURE MODULATING CONTROL	1	CPM-A
6	ON/OFF HYDRAULICALLY MODULATING ASSEMBLY	1	X78-7 (#)
7	NEEDLE VALVE	1	6120
8	RESTRICTION ASSEMBLY	1	X58A/KX**
9	STRAINER	1	X43
10	MANUAL OPERATOR (HIGH PRESSURE) NORMALLY CLOSED	1	RB-117

### OPTIONAL FEATURES

No	Description	Qty	Type
T2	EXPANSION VESSEL	1	V160
Y	HIGH CAPACITY STRAINER	1	X43-80/EP

### NOTES

AE/GE : DN 50 - DN 400 / NGE : DN 65 - DN 600

(1) 100-01\* :

AE/GE DN 50 - DN 100 / NGE DN 65 - DN 150 : 100-LFS

AE/GE DN 150 - DN 400 / NGE DN 200 - DN 600 : 100-01

(2) X58A/KX \*\* : 58846

OPTIONAL FEATURES : — — — — —

NOT FURNISHED BY CLA-VAL : — — — — —

(#) = According to valve size this feature type could change