



### CV-UPS with Integrated Battery

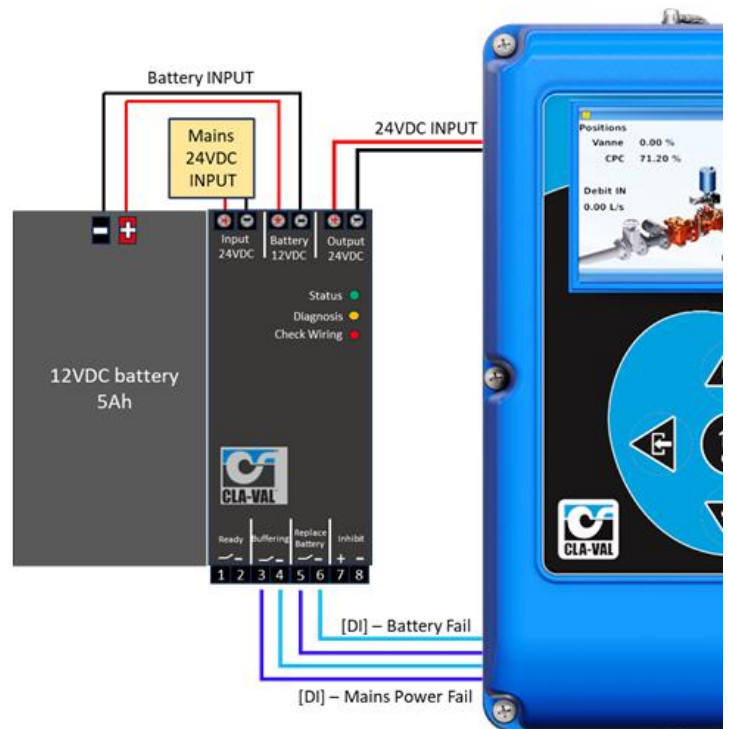
- Compatible with the Cla-Val D22 Controller
- 24VDC to valve/controller on loss of power
- Compact and easy to install (DIN rail mountable)
- Easy battery access
- Stable output voltage
- Rechargeable battery

The CV-UPS uninterruptible power supply (UPS) controller with integrated battery is a compact addition to standard 24V power supplies to bridge power failures or voltage fluctuations.

Placing the control valve into a default position of loss of power can avoid expensive downtimes, tank overflow and loss of service to networks. The CV-UPS includes a professional battery management system which charges and monitors the battery to achieve the longest battery service life as well as many diagnostic functions that ensure a reliable operation of the entire system.

A unique feature of the CV-UPS is that only one 12V battery is required to buffer the 24V output. This makes matching batteries unnecessary and allows a precise battery charging and testing. The CV-UPS has one integrated 12V 5Ah high current VRLA battery, which is easy to change.

### D22 Controller with CV-UPS



<b>Dimensions:</b>	<b>123mm (W) x 124mm (H) x 119mm (D)</b>
<b>Temperature range:</b>	<b>0 to 40° C</b>
<b>Battery:</b>	<b>12VDC 5Ahr</b>
<b>Weight:</b>	<b>2.9 Kg</b>
<b>Product Code:</b>	<b>CVUBC10-241</b>