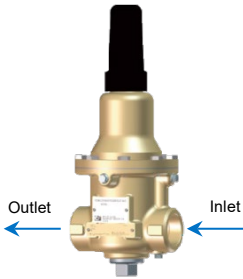


Simple, Reliable and Accurate

1/2" and 3/4"
Globe
Configuration



0-75 psi
20-200 psi

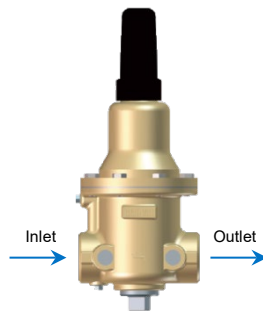
1/2", 3/4" and 1"
Angle
Configuration



1" Size
20-75 psi
40-200 psi
100-300 psi



100-300 psi



More materials available

- Available sizes 1/2", 3/4" and 1"
- Use in High-Rise Buildings, Industrial Facilities and Municipal Water Systems
- Direct Acting - Precise Pressure Control
- Drip Tight Closure
- No Packing Glands or Stuffing Boxes
- Globe or Angle configurations available
- Sensitive to Small Pressure Variations
- Meets low lead requirements
- Available in Nickel Aluminum Bronze and Stainless Steel

The CLA-VAL Model 55B-60 Pressure Relief Valve is a direct-acting, spring loaded, diaphragm type relief valve. The valve may be installed in any position and will open and close within very close pressure limits. The bottom plug may be removed and installed in the inlet to convert it to an angle pattern flow path.

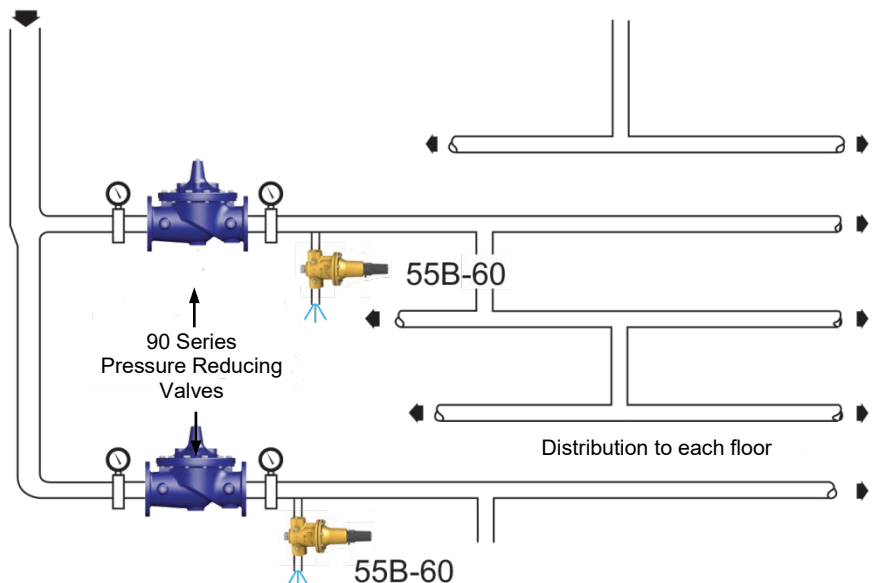
The Model 55B-60 is normally held closed by the force of the compression spring above the diaphragm. When the controlling pressure applied under the diaphragm exceeds the spring setting, the disc is lifted off its seat, permitting flow through the control. When control pressure drops below the spring setting, the spring forces the control back to its normally closed position. The controlling pressure is applied to the chamber beneath the diaphragm through an internal passage. A gauge port is provided for accurate pressure setting.

Pressure adjustment is done by turning the adjusting screw to vary the spring load on the diaphragm. The 55B-60 is available in pressure ranges suited to agency approval tests. To prevent tampering, the adjustment cap can be wire sealed by using the lock wire holes provided in the cap and cover.

TYPICAL APPLICATIONS

The Model 55B-60 is used in high-rise building water systems to prevent pressure build-up whenever line pressure exceeds the setting of the spring.

Typically installed downstream of pressure reducing valves, the 55B-60 relieves excess pressure to atmosphere to prevent damage to the distribution network. Adequate drainage must be provided.





CLA-VAL 55B-60

Pressure Relief Valve

► SPECIFICATIONS

Size: 1/2", 3/4" and 1" Threaded NPT

Temperature Range: Water, Air: to 180°F Max.

Materials:

Body & Cover: Low Lead Bronze

Stainless Steel ASTM A743-CF-16F

Monel

Super Duplex Stainless Steel

Trim: 303 Stainless Steel & Monel

Rubber: Buna-N® Synthetic Rubber

Pressure Ratings: Cast Bronze 400 psi max.

Stainless Steel 400 psi max.

Other Materials: Available on special order

Adjustment Ranges:

0 to 75 psi - 20 to 200 psi - 100 to 300 psi

► PRESSURE DROP CHART [IN GPM AND PSI]

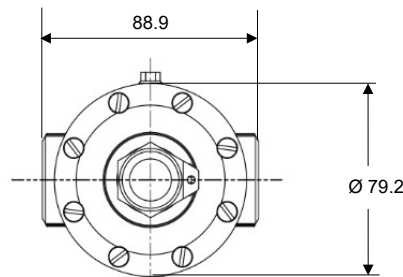
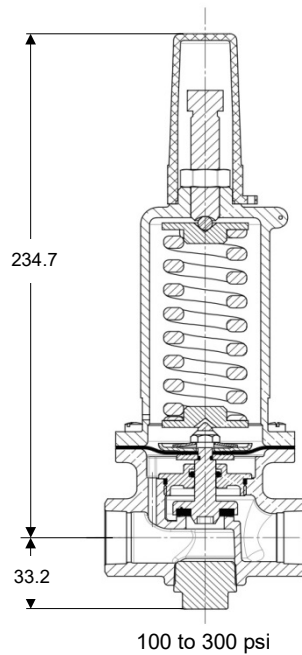
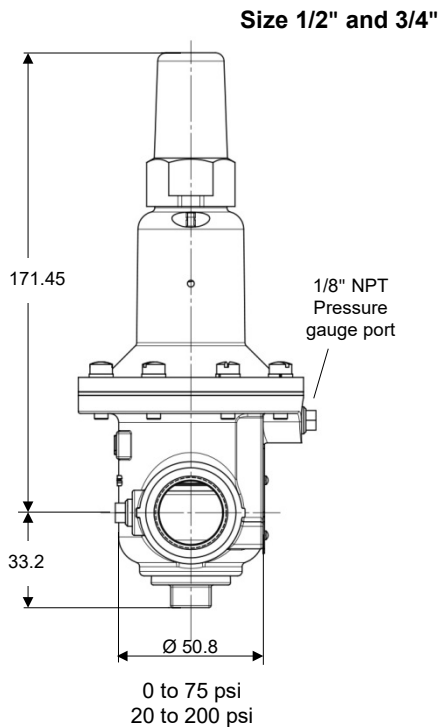
(Full open valve)

Valve size	Cv Factor	Max Flow [GPM]
1/2"	6	25
3/4"	8.5	40
1"	12.8	65

► WHEN ORDERING, PLEASE SPECIFY

1. Catalog No. 55B-60
2. Valve size
3. Adjustment Range Desired
4. Optional Materials

► 55B-60 DIMENSIONS [IN MM]



(Applies to size 1/2" and 3/4")

