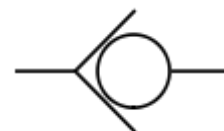


Aqua 30-601

Silent Globe Check Valve

Simple, Reliable and Accurate

- Very Low Head Loss
- Reduces Pumping Costs
- Fast Acting
- Silent & Compact Design
- Operates in any Position



Cla-Val Model Aqua30-601 – Main Function

The Cla-Val Model Aqua-30-601 is a spring loaded axially guided check valve which combines a valve with very low head-loss coupled with a fast acting closing characteristic on flow reversal to mitigate water hammer

Typical Application

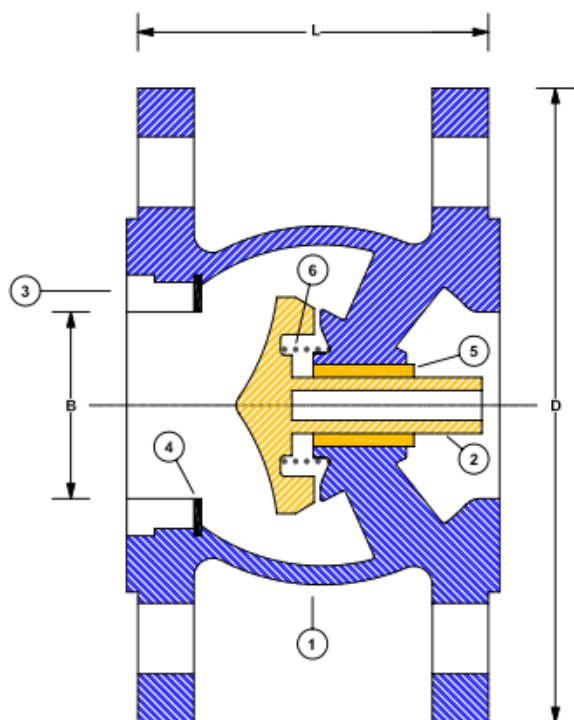
The Cla-Val Model Aqua30-601 is typically installed on the discharge of pumps or well pumping systems to prevent back flow to protect the pumps from damage. They are commonly installed for the protection of low pressure water network systems from higher pressure sources. The valve is suitable for use in both potable water and strained raw water applications.

Specifications

Sizes	50mm to 200mm
Temperature Range	-10 Deg C to 80 Deg C
Pressure Rating	16 Bar
Flange Type	PN16
Mediums	Clear Liquid
WRAS Approval No	WRAS 1410317

Cla-Val Model Aqua30-601

Materials of Construction & Dimensions



1	Body	SG Iron 420/12 Epoxy Coated
2	Plunger	SG Iron 420/12 Epoxy Coated
3	Ring	SG Iron 420/12
4	Seal	Nitrile Rubber 70 Shore
5	Guide	Gun Metal Grade LG2
6	Spring	304SS S26

Size (mm)	B (mm)	D (mm)	L (mm)	Weight (kg)
50	50	165	100	8.5
65	65	185	120	9.25
80	80	200	130	10
100	100	220	155	15
125	125	250	200	20
150	150	285	230	30
200	200	340	280	50

Headloss Chart

NOTE: Dotted line: Opening stage of Valve **Solid Line:** Valve Fully Open

